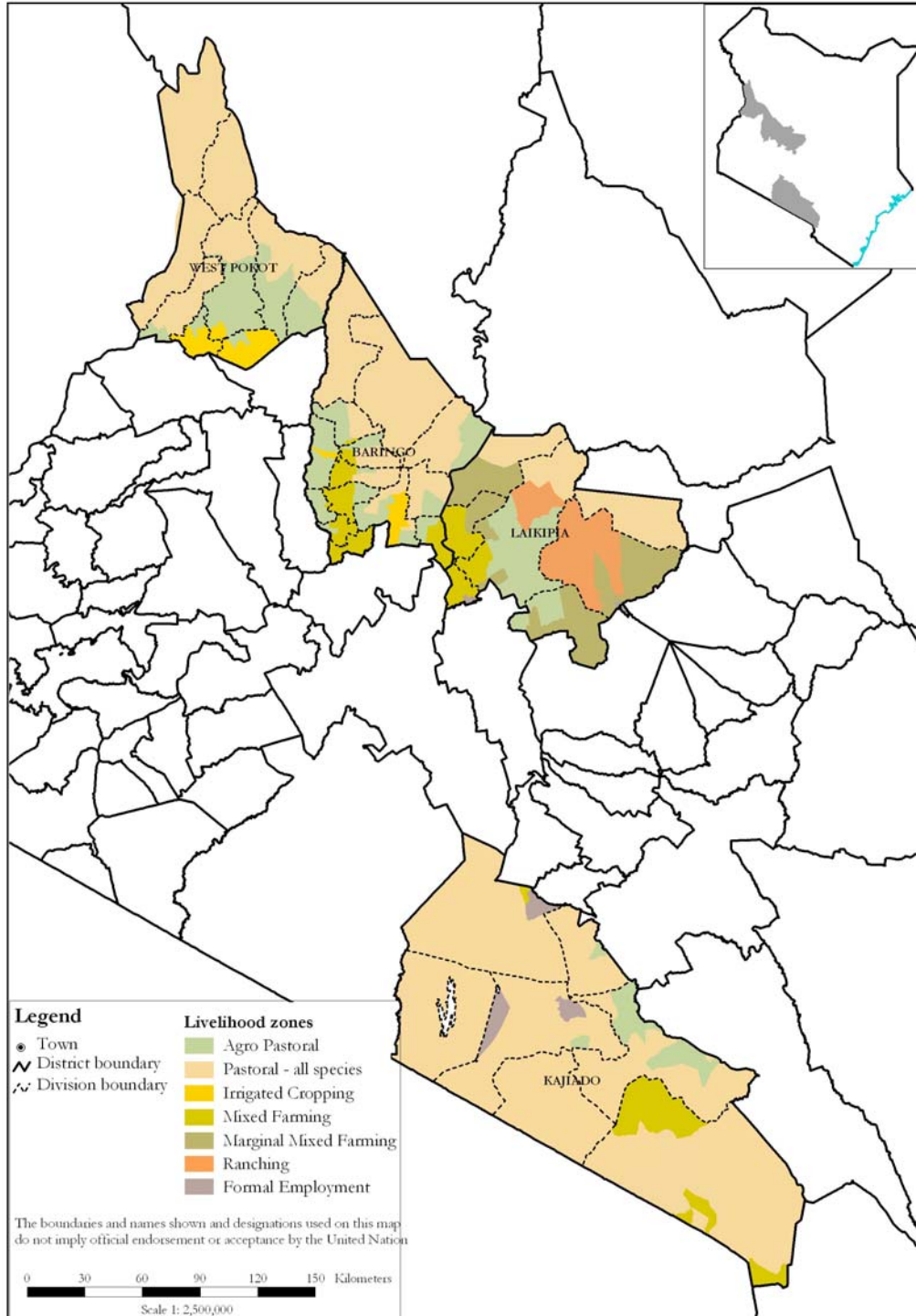


Agro Pastoral Cluster Report

2008 Long Rains Assessment

14th July – 1st August



EXECUTIVE SUMMARY

The long rains assessment (LRA) 2008 was carried out from 14th July to 1st August 2008 as part of the bi annual food security assessments that is carried out by the Kenya Food Security Steering Group (KFSSG) every year. The assessments was carried out in the ASAL districts and areas affected by the post election violence. This report covers the Agro-Pastoral Cluster that includes Kajiado, Laikipia, Baringo and West Pokot Districts. In the recent past all these districts have been split to form two or more districts. For the purpose of this assessment, the districts have been handled as the original larger ones that existed before 2007.

The purpose of the assessments was to establish the current food security situation in the target districts, the trend and projected scenario for the next six months through analysis of secondary data from the District Steering Groups (DSGs) coupled with field visits to assist the Assessment Team get a visual perception of area and conduct ad hoc interviews of the local people. This report summarises the food security situation in the Agro-pastoral Livelihood Cluster and also makes recommendations on some non-food interventions that will have impact in improving food security in the cluster.

The food security situation in the agro-pastoral cluster districts range from moderately food insecure to generally food secure (low resilience). In the pastoral LZ of Kajiado district, the food security situation could deteriorate further in two to three months subject to the onset of the next short rains. Resumption of rains in West Pokot and Baringo / Pokot East district may improve the quality and quantity of pastures /browse and recharge sub-surface water structures, but return of cattle which had moved to dry grazing areas is not certain.

The staple food prices are higher than normal in the entire cluster by 60 to 120%.The quarantine due to the PPR threat will continue to affect livestock market function resulting to unfavourable terms of trade thus affecting food access.

In view of the prevailing food security situation, both food and non- food interventions have been recommended in West Pokot, Laikipia and Baringo districts. In Kajiado, only non- food interventions were recommended.

1.0 INTRODUCTION

The agro-pastoral livelihood cluster is composed of Kajiado, Laikipia, and Baringo and West Pokot districts. The five districts cover an area of 49,350 square kilometres and a population of 1,648,603 million people. The main livelihoods in this cluster are pastoral, agro-pastoral, mixed farming, marginal mixed farming, ranching, formal employment and trade among others. Pastoralist and mixed farming account for approximately 60% of the livelihood zones.

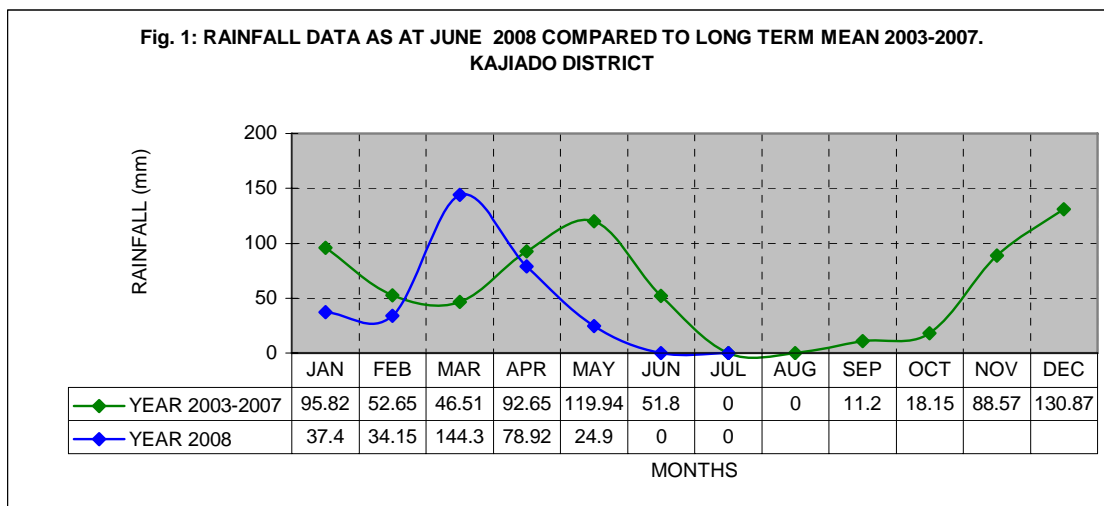
Summary of On-Going Interventions

- Promotion of Drought tolerant crops and training of farmers on animal traction power for ploughing.
- Disease surveillance and vaccination campaigns against notifiable diseases
- Capacity building of livestock farmers on pastures harvesting and baling.
- Promotion of livelihood diversification through activities like apiculture
- Restocking of livestock for households in Kajiado District
- Livestock upgrading programme through cross breeding in Kajiado District
- De-silting and excavation of pans and earth dams
- Drilling of new boreholes, rehabilitation of non-functional ones and support of rapid response teams
- Implementation of ‘Malezi Bora’ campaigns to improve mother and child health
- Peace building and reconciliation initiatives
- Regular School Feeding Programme (RSFP) in most of the primary schools, e.g. Kajiado -72%, West Pokot – 83% and Baringo – 69% of schools are covered.

2.0 SITUATION ANALYSIS

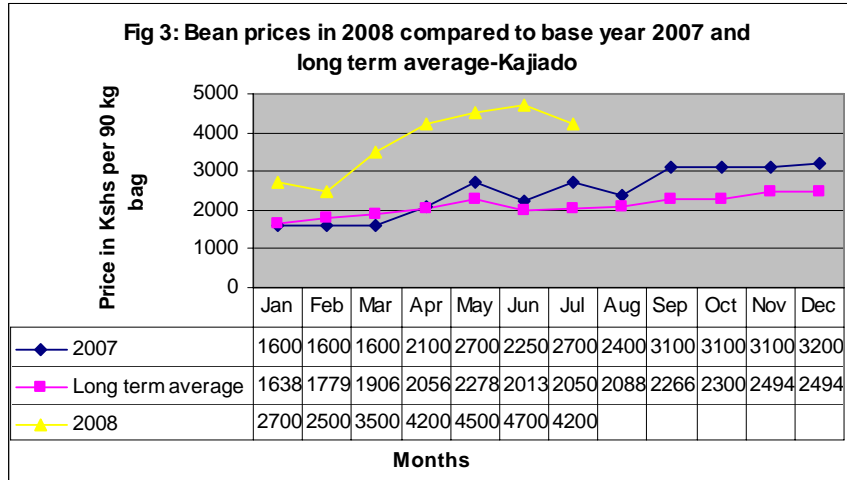
2.1 Rainfall Performance

The onset of the 2008 long rains was timely (mid-March) in the four districts. In Baringo, the rains were slightly above normal between mid-March and early May, but drastically subsided up to mid-July when rains resumed. West Pokot, Kajiado and Laikipia districts received below normal rainfall after April, and ceased abruptly. The rains resumed in June/July in Laikipia, Baringo and West Pokot district. Kajiado district received more than LTA rainfall in March but has not received any since May. The cluster is categorized as long rains dependant (see figure 1). *Source: ALRMP, Kajiado*



2.2 Crops

Annual crops in the four districts succumbed to water stress due to inadequate and erratic long rains season. This resulted to 80-100% maize and bean loss in Baringo, West Pokot and Laikipia districts. The main crops grown are maize and beans. Horticultural crops such as



onions, tomatoes and other green vegetables are grown under irrigation in the cluster.

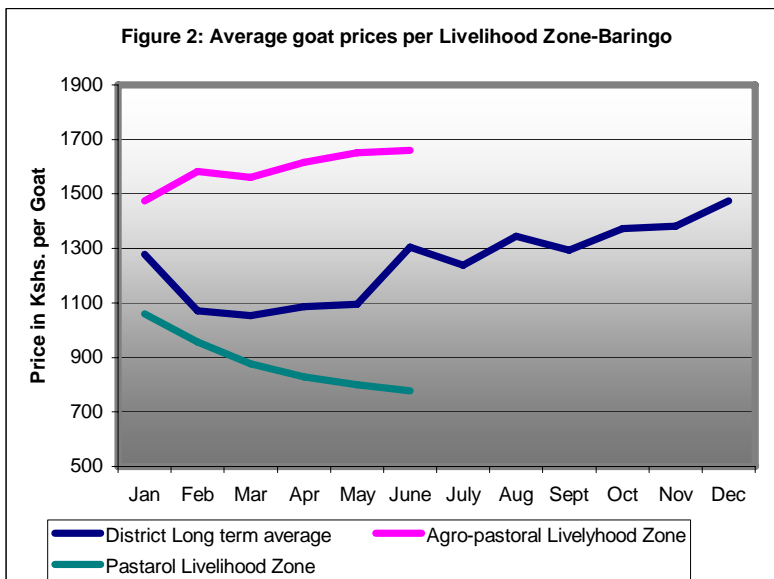
All four districts are experiencing high fuel prices and thus high transport costs; the prices of maize and beans are higher than the long term average across all the districts and

livelihood zones with between 60 - 120% as illustrated in figure 3. This is mainly due to deficits in production in the last two seasons. In the agro-pastoral LZ of Baringo less than 10% maize harvest is expected but over 40% in mixed farming zones.

2.3 Livestock

The pasture situation is poor to fair in West Pokot, Baringo and Laikipia, though the situation is expected to improve due to the ongoing rains. In Kajiado pastures in the wet grazing areas are depleted resulting in early migration to dry grazing areas. The browse situation is fair to good.

The cattle body condition in the mixed farming LZ is fair to good in Baringo and Laikipia, but poor in other livelihood zones. In West Pokot district, cattle body condition is fair to good across all LZs. The body condition of the small stock (sheep and goats) is good in Baringo,



West Pokot and Laikipia districts, but fair in Kajiado this may however deteriorate due to increasing trekking distances (5-10 Km) to pasture and water. Distances to watering points are normal in the cluster

Cattle prices in Laikipia are lower than the long term average (LTA), but significantly higher in West Pokot, Baringo and Kajiado(5-10%). In Baringo goat prices are above LTA in agro-pastoral zones but are below in the pastoral

zones (see figure 2).

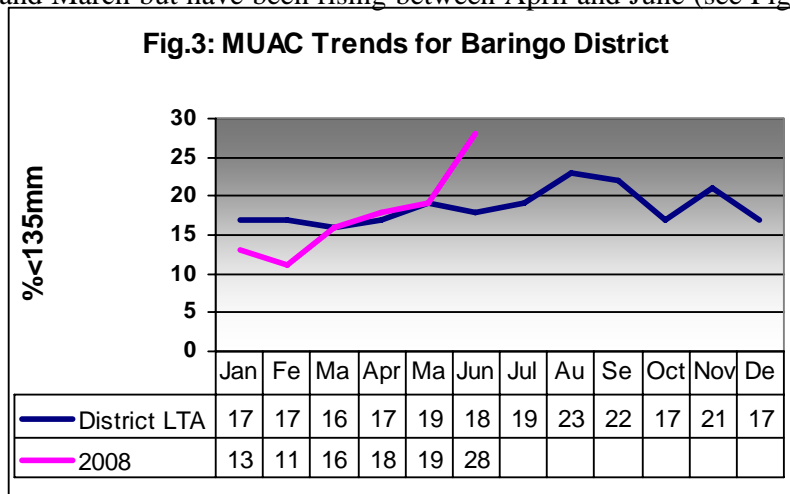
Goat prices in the agro-pastoral LZ are on an upward trend due to fair body condition, but declining in the pastoral livelihood zone. This is due to poor body condition occasioned by poor pastures, dwindling water resources and outbreak of PPR which triggered imposition of quarantine.

Milk production has decreased by 60% of normal production in the agro-pastoral and pastoral LZ, and 40 % in the mixed farming LZ. It is expected to increase in the lowlands owing to the rains and pasture regeneration in the pastoral zones.

There were no major disease outbreaks in Kajiado which may be attributed to a vaccination campaign carried out between April and June. However, PPR is threatening sheep and goats in West Pokot and Baringo Districts (goats-70% and sheep-63%). In West Pokot 750,000 sheep and goats are at risk of PPR and CCPP.

2.4 Health and Nutrition

In Baringo, the malnutrition rates were below the long term average (LTA) between January and March but have been rising between April and June (see Figure 3). The nutritional status for Laikipia has been normal for the last three years though it varies from division to division.



Mukogodo Division has the highest malnutrition LTA but has also improved the most (8.5 to 6.5%), while Lamuria Division has the lowest LTA. In West Pokot the monthly MUAC levels have been fluctuating between 4.6 and 9.1 for

the last six months but are still below the LTA and the threshold. In Kajiado the nutritional status in the district as reflected by MUAC shows an improvement with monthly MUAC levels being below the 2005-2007 levels.

The prevalent diseases are upper respiratory tract infection (URTI) malaria; other common diseases in all the districts are skin diseases, diarrhoeal diseases, pneumonia and HIV/AIDS. The HIV/AIDS levels in Baringo, West Pokot and Laikipia have shown a declining trend but in Loitokitok District (Kajiado) there has been an increase from 2.8% in 2004/2005 to 3.1% in 2006/2007.

Immunization levels for Laikipia, Baringo, Kajiado and West Pokot are 66, 75, 98 and 46%. This means that Laikipia, Baringo and West Pokot are below the recommended target of 80%.

Quantities and qualities of meals have reduced due to reduction of meals at household level in Baringo and West Pokot districts resulting in poor dietary diversity. In the pastoral livelihood zones of West Pokot district, only one meal was consumed in a day, with a variance noted in the agro pastoral and mixed farming livelihood zones where 2-3 meals were consumed in a day

2.5 Education

The total number of public and early childhood development centres in the cluster is 1,986. The regular school feeding programme is ongoing in approximately 65% of the schools. The school feeding programme has greatly enhanced the enrolment rates in schools with an estimated 86% of the eligible children in West Pokot district enrolling for primary education. Laikipia district however has a low annual enrolment increase of 8%, a situation attributed to the poor distribution of schools in the district as well as the migration patterns that see children drop out of school to move with their families. Drop outs and transfers of children from non-feeding to feeding schools within the cluster was a common phenomenon that resulted in sometimes low enrolment in the schools. Low transition rates of primary schools were as a result of nomadism/migrations to settlement areas, insecurity and early marriages especially in the pastoral areas of Laikipia and West Pokot.

2.6 Main Food Security Threats

The main factors affecting food security across the cluster included:

- Cumulative effect of the poor performance of the 07/08 short rains (20-50%) and the 08 long rains in Baringo
- Insecurity due to cattle rustling in West Pokot and Baringo
- High food prices coupled with low livestock prices
- Livestock diseases mainly PPR and CCPP
- Poor market access
- Livestock quarantine due to diseases leading to closure of markets
- Wildlife menace leading to destruction of crops in Kajiado
- Human/wildlife conflicts due to competition of resources mainly pasture and water.

2.7 Food Availability and Accessibility

Generally, low levels of stocks are held at the district level; 178,185 MT maize in Kajiado, 24,967 MT in West Pokot, and 11,967 MT in Baringo.

Food is available in the markets, though at high prices resulting in reduced purchasing power at household level. In the agro pastoral and pastoral LZ of Kajiado, majority of the households purchase food stocks from the market from the proceeds of sales of livestock.

2.8 Coping Strategies

Coping strategies employed varied within the cluster. The wild fruits, berries and vegetables are consumed in the pastoral and agro pastoral LZ of west Pokot. Other coping strategies include the reduction in quantity of meals, skipping of meals and borrowing from friends and relatives.

2.9 Food Security Prognosis

The food security in the agro-pastoral cluster districts range from moderately food insecure to generally food secure (with low resilience). The pastoral livelihood zones for Baringo, Laikipia and Kajiado districts fall under the moderate food insecure bracket while Pokot East district is experiencing acute food insecurity. The food security situation in the mixed farming livelihood zones for Baringo, West Pokot and Laikipia is improving as 40 % of the normal harvest is expected in August (beans) and September/ October (Maize). Diversified sources of livelihood in these areas provide resilience from shocks. In the pastoral LZ of Kajiado district, food security situation could deteriorate further in the next two to three months subject to the onset of the next short rains.

The resumption of rains in West Pokot and Baringo / Pokot East district may improve the quality and quantity of pastures /browse and recharge sub-surface water structures, but return of cattle which had moved to dry grazing areas is not certain. This is because in the normal circumstances, such migration occurs in September/October and therefore the livestock is likely to remain there until the onset of the short rains. This scenario implies that milk availability at the household level of the agro-pastoral and pastoral LZs in the entire cluster will continue to be compromised as production has reduced by 80 % of the normal.

The staple food prices are higher than normal in the entire cluster by 60 to 120% and are expected to remain so until some substantial harvests are realized in these districts or in the surrounding districts. The quarantine due to the PPR threat will continue to affect livestock market function resulting to unfavourable terms of trade thus affecting food access.

2.10 On-Going Interventions

The following are a summary of the recommendations made after the SRA 2008 for the period March – July:

- Regular school feeding programmes covers all the districts in the cluster.
- Value addition of agricultural produce to facilitate adequate storage at household level.
- Provision of drought resistant seeds varieties
- Livestock disease surveillance and control of PPR through mass vaccination
- Conduct comprehensive health and nutrition survey and improve access to Comprehensive Care Clinics (CCCs)
- De-silting water pans and construction of boreholes

The following are the interventions carried out since March 2008:

- Value addition of agricultural produce to facilitate adequate storage at household level done through field days and provision of drought resistant seeds varieties
- 30-35% livestock vaccinated in Kajiado, West Pokot and Baringo against PPR. 9,393 cattle and 242 goats/sheep vaccinated against FMD and CCPP respectively in Baringo
- Imposition of a quarantine against FMD and PPR in Baringo and West Pokot Districts respectively which is still in force.
- Health and nutrition survey done in West Pokot. Report under preparation
- Indoor Residual spraying and distribution of LLITNs through Health facilities
- Comprehensive Care Clinics (80 CCCs in Kajiado, 5 West Pokot, 2 in Baringo)
- Implementation of community strategy on-going in all districts
- De-silting water pans and construction of boreholes

Below is a summary of the impacts of the above interventions:

- Promotion of drought tolerant crops and training of farmers on animal traction power for ploughing has improved production.
- Disease surveillance for both human and livestock has improved response.
- Restocking of livestock in Kajiado and West Pokot to build resilience.
- Promotion of apiculture and livestock upgrading in Kajiado and West pokot.
- Decrease of HIV prevalence rates (6.5 % - 5.6% in Laikipia and 5.2% - 3.3% in Baringo).
- De-silting water pans and construction of boreholes. Minimal impact due to poor rains.

The following are the gaps and necessary interventions currently required:

- Scale up vaccination against PPR, FMD, CCPP, CBPP, BQ, LSD, and tick and trypanocidal control in all districts

- Rehabilitation of non-functional boreholes, earth dams and training water project committees.
- Establish a conflict early warning system and strengthening peace building initiatives.
- Up scale agricultural and veterinary extension services.
- Provision and promotion of drought tolerant seeds' varieties.
- Conduct an integrated sanitation, health and nutritional survey
- Capacity building for DSG members in the cluster.
- Establishment of mobile and boarding schools and strengthen regular school feeding programme and supplementary feeding to vulnerable groups
- Diversification of livelihood through promotion of apiculture and Aloe Vera farming.
- Promote soil and water conservation on pasture land and arable land.
- Expansion of the area under irrigation.
- Promote construction and utilization of pit latrines.

AGRO-PASTORAL CLUSTER STRATEGIC RESPONSE FRAMEWORK MATRIX (LRA 2008)

Phase Classification	Sector	Interventions		Justification	Total Budget (KES)	Sources Of Fund
		immediate	Long term			
Borderline food secure / Acute food and livelihood crisis	Agriculture	Avail drought tolerant seed for bulking to farmers Capacity building on Post harvest management	Provide Drip irrigation kits for demonstrations and fencing material Animal traction equipment and starter seed. Value addition on agricultural produce, energy saving devices , oil extraction machines	Improve land under drought tolerant crops Promote small scale irrigation for food production given the unreliable rains Improve land preparation and field operations Reduce post-harvest losses Minimize waste and increase returns. Fuel energy conservation	8.92 Million Drip kit 448,000.00 Fencing material- 484,000.00 200,000.00 1.38 Million	GoK, ALRMP II Donor agencies,NGOs , ALRMP,GOK
Borderline food secure / Acute food and livelihood crisis	Livestock	Livestock disease surveillance and vaccinations PPR (1,250,000 sheep and goats) and other notifiable diseases.		To control PPR and other outbreaks to lift quarantines.	9.5m	GOK, MoLFD, ALRMP, CDF, Local NGOs
			Training on pasture conservation	Creation of strategic fodder reserves to enhance pasture availability during the dry seasons	Baler/mower 4.5Million	Farmers contribution ADB/ALRMP
			Establishment of diseases free zones	Contain disease threats from neighbouring districts	Vaccine purchase @ 500,000x26 and logistics 18.0Million	Vet department ALLPRO/ALRM P/NGOS, GoK.
			Livestock breed improvement through the purchase of dairy and dopper animals	Increase quality and productivity of animal breeds	6 Million	Private ADB/ Donors, MoLFD
		Control of Ipomoea weed		To improve on pasture management	3 Million	MoLFD, ALRMP, CDF, Local NGOs
Borderline food secure / Acute	Water and Sanitation	Repair and rehabilitation and drilling of boreholes; desilting of water pans		Improve water availability and accessibility	33.5 Million	Community, CDF, GOK

Phase Classification	Sector	Interventions		Justification	Total Budget (KES)	Sources Of Fund
		immediate	Long term			
food and livelihood crisis						Local NGOs
			Protection and management of water resources	To enhance sustainable utilization of water resources	5 Million	GOK, CDF
		Purchase of portable water sampling kits to monitor water quality and training on proper hygiene practises		To facilitate regular water quality monitoring and general improvement of hygiene within the districts	6.32 Million	GoK, ALRMP, Local NGOs, CDF, District water office
Borderline food secure / Acute food and livelihood crisis	Education	Regular school feeding programme		To improve nutritional status of children and reduce drop out rates in schools		GOK, WFP & ALRMP
			Develop viable sustainability projects in schools	For assurance of sustainability of school programmes and involve community members in running schools		GOK & ALRMP, School Administration
Borderline food secure / Acute food and livelihood crisis	Health and Nutrition	Health and nutrition survey		Establish current status regarding malnutrition, health seeking behaviour for appropriate response options	7m	GOK, UNICEF, ALRMP
		Establishment of sentinel sites for HIV/AIDS surveillance		To sensitize the community on HIV/AIDS and increase awareness of the disease and methods of control	5m	GOK, MOH, NGOs
			Integrated mobile/outreach services and establishment of community health units.	Improve access to health service, care, community involvement and participation in healthcare services.	10m	GOK, UNICEF, ALRMP
		Purchase and distribution of Treated mosquito nets with insecticide residual spray as well as malaria campaigns		High malaria incidence and prevalent rates Also to protect mothers and children.	5.5m	Donor support GoK NGO